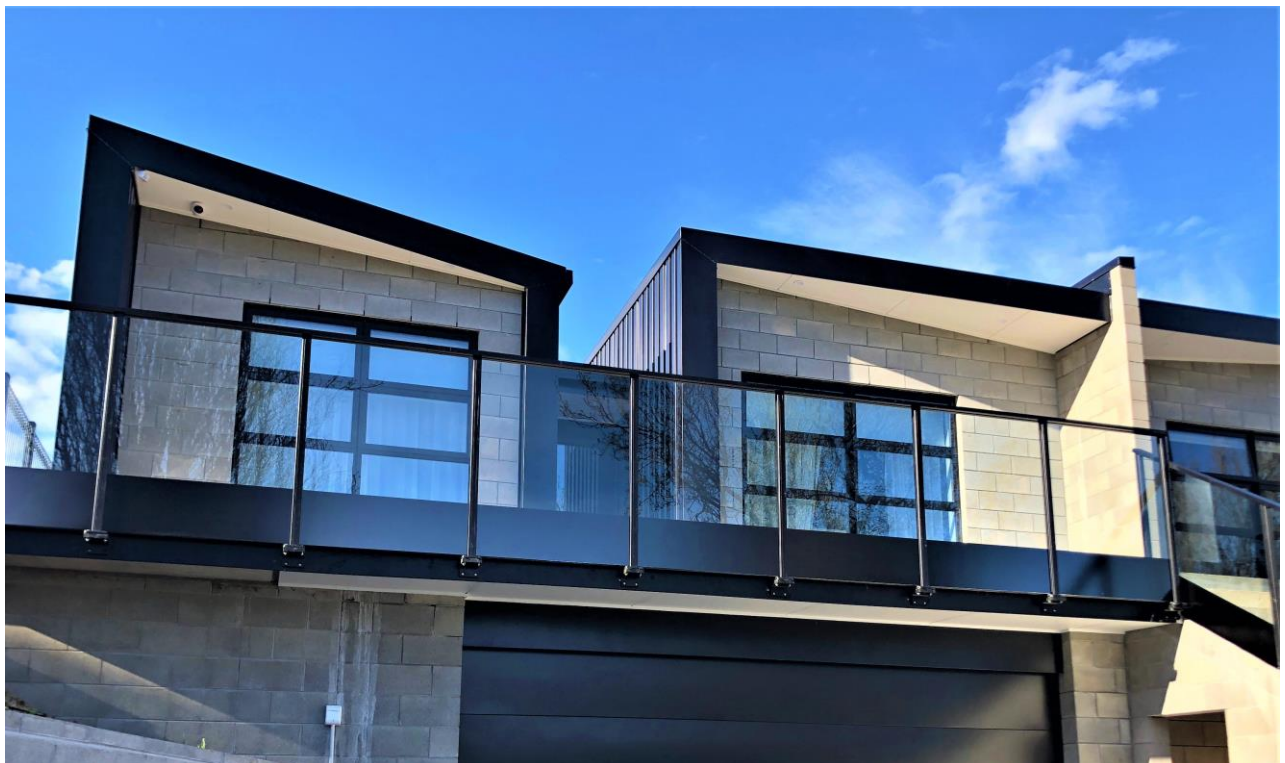


PROVISTA

BALUSTRADE SYSTEMS

ALUMINIUM GUTTER BRACKET



"THE CHOICE IS CLEAR"



CONTENTS

1. Description
2. Key Features
3. Scope of Use
4. Limitations on Use
5. In-Service History
6. Statement of Building Code Compliance
7. Connection References
8. Gutter Bracket Dimensions

"THE CHOICE IS CLEAR"

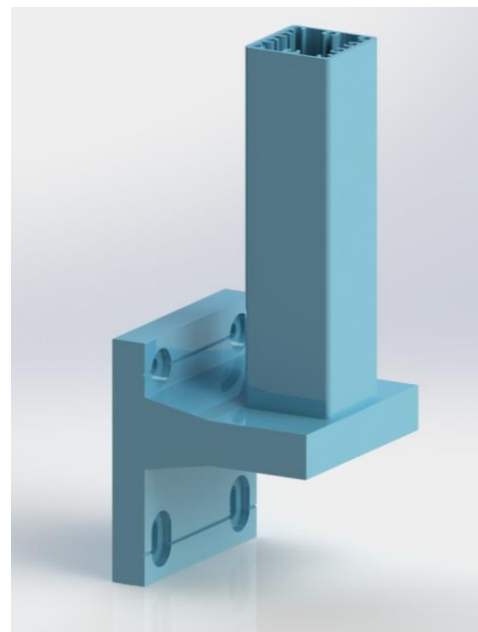
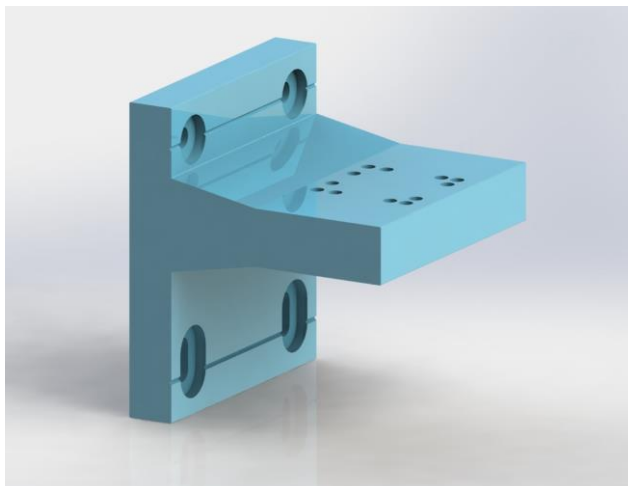
Aluminium Gutter Bracket

Description:

Provista Balustrade Systems Aluminium Gutter Bracket solution is designed for use in membrane and floating deck applications where typical direct-fixing of balustrade post structures is not possible. The Gutter Bracket design provides a very rigid mounting platform for Provista Framed and Semi-Frameless Ultra post profiles. With posts direct-fixed to the Gutter Bracket platform a very clean and modern look is provided. The heavy duty design and use of T6 Temper Grade alloy means good post spacings are achieved along with compliance with Extra High wind zone applications as standard.

Key Features:

- Designed for residential and commercial applications including apartment balconies and decks
- Suitable for exterior applications
- Designed for all building structures including membrane and floating decks
- T6 Temper Grade alloy used, providing approx. 20% increased strength for greater post spacings
- Multiple finish options – can be powder-coated or anodised in all available NZ colours, including Dulux Duratec powder coating for high-corrosion zones
- National design service to assist with project specific design and detailing
- National network of fabricators and installers
- Complies with AS/NZS 1170, NZS3603, AS/NZS 1664, AS/NZS 2208 and NZS 4223.3 2016
- 5 year warranty on balustrade, 10 year warranty on Dulux Duralloy powder-coating, 20 year warranty on Dulux Duratec powder-coating



“THE CHOICE IS CLEAR”

Scope of Use:

The Provista Gutter Bracket, in conjunction with Ultra Framed and Semi-Frameless Glass solutions, are designed to comply with A, B, E and C3 loadings for residential and commercial occupancy types and is suitable for decks, balconies and stairways.

Suitable building structures can be timber, concrete, steel and typical combinations of each.

Address or Site-specific design and Producer Statements can be arranged as required.

Limitations on Use:

- The Provista Aluminium Gutter Bracket should only be used in accordance with the Provista Technical Manual. The Manual confirms post spacings and fixing methods available
- Not suitable for Commercial Occupancy Type C5
- Specified for use in **Extra High Wind Zones**. Site Specific PS1 and Calculations can also be provided for SED Wind Zones
- For high corrosion zones use Dulux Duratec powder-coating

NZS 3604 MAXIMUM SUITABILITY



Extra High Wind Zone

In-service History:

Provista has over 12 years of balustrade and pool fence design, development and installation experience across New Zealand. Provista products are designed and manufactured for NZ conditions. Provista balustrade solutions have been installed in thousands of homes, apartments, schools, aged care villages etc. Many kilometres of Provista balustrade solutions are installed across the length and breadth of NZ

“THE CHOICE IS CLEAR”

Statement of Building Code Compliance:

- Provista Balustrade Systems solutions have been designed and tested by independent engineers to comply with:
 - o AS/NZS 1170 Structural Design Actions
 - o NZS3603 Timber Structures Standard
 - o AS/NZS 1664 Aluminium Structures – allowable stress design
 - o AS/NZS 2208 Safety Glazing Materials in Buildings
 - o NZS 4223.3 2016 Glazing in Buildings – Human Impact Safety Requirements
- The Provista Gutter Bracket is designed for applications within Occupancy A, B, E and C3
- Designs are engineered to comply with B1, B2, F2 and F4 of the NZ Building Code
- For applications outside the Provista Technical Manual specifications a Site Specific PS1 can be prepared upon request

NZBC DESIGNED TO COMPLY

B1

Structure

B2

Durability

F2

Hazardous Materials

F4

Safety from Falling

Connection References

Provista Framed Aluminium Balustrades

- Connection Type 1 – Timber Side Fixed 3 x 240x45 (Coach Screws) Page 10
- Gutter Bracket Design Page 18

Provista Framed Glass Balustrade

- Connection Type 1 – Timber Side Fixed 3 x 240x45 (Coach Screws) Page 10
- Gutter Bracket Design Page 18

Provista Semi Frameless

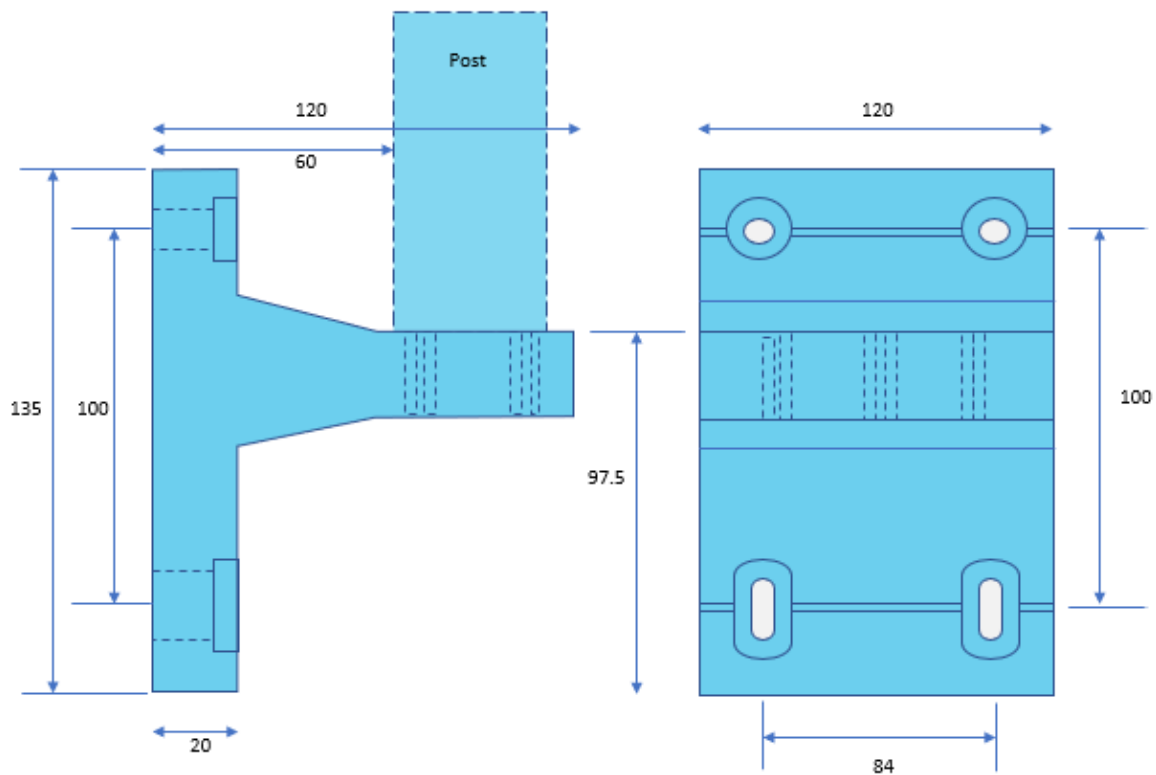
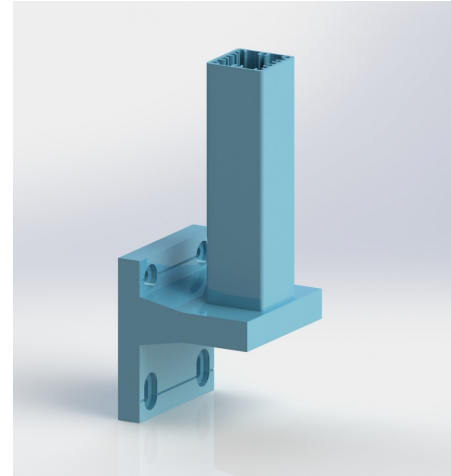
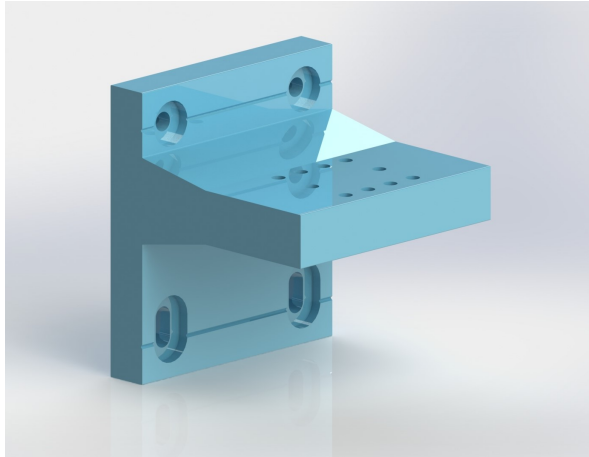
- Connection Type 1 – Timber Side Fixed 3 x 240x45 (Coach Screws) Page 10
- Gutter Bracket Design Page 17

Provista Slat Balustrade and Pool Fence


- Connection Type 1 – Timber Side Fixed 3 x 240x45 (Coach Screws) Page 10
- Gutter Bracket Design Page 18

“THE CHOICE IS CLEAR”

Gutter Bracket Design



11 GUTTER MOUNTING BRACKET
SCALE 1:2

 **obd consultants**
Structural & Engineering Design

DRAWING SHEET #: S13
REVISION: A
DATE: 10 NOVEMBER 2016
PLEASE REFER TO GENERAL NOTES.